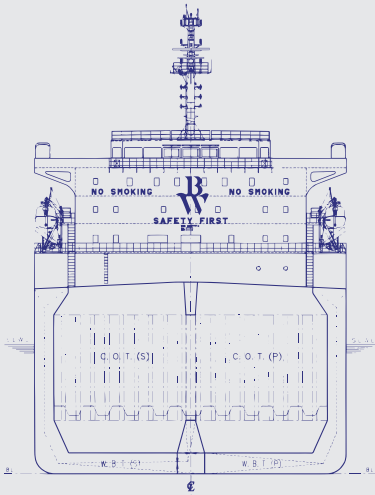




Group Fleet List and Contact Details



BW Group
Website: www.bw-group.com
Singapore: +65 6337 2133

BW Offshore
Website: www.bwoffshore.com
Singapore: +65 6632 7888
Norway: +47 2313 0000
USA: +1 713 781 0670
Nigeria: +234 127 05 146/
Brazil: +254 2125432339

BW LPG
Website: www.bwlp.com
Singapore: +65 6705 5588
USA: +1 713 781 0670

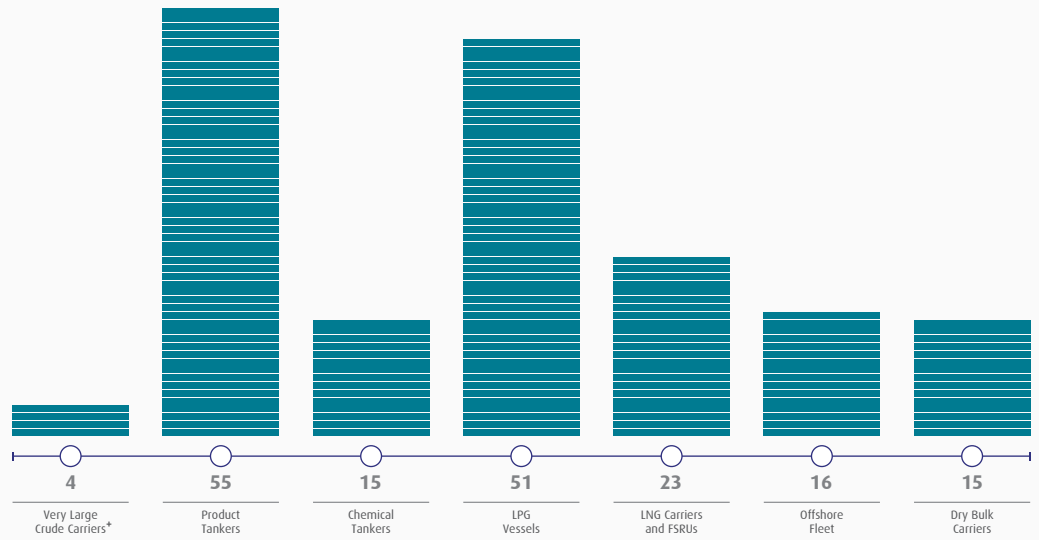
BW Tankers
Website: www.bwtankers.com
Singapore: +65 6434 3770
Denmark: +45 7211 2810
USA: +1 713 781 0670

BW Dry Cargo
Singapore (Principal): +65 6337 2133
Denmark (Agency): +45 7211 2820

BW LNG
Singapore: +65 6337 2133
Norway: +47 6721 1600
USA: +1 713 781 0670

BW Fleet Management
Singapore: +65 6337 2133
Norway: +47 6721 1600
India: +91 (22) 4248 4000
Philippines: +63 (2) 895 2469

BW Chemicals
Singapore: +65 6337 2133



VLGC Fleet		
Vessel Name	Built	CBM
Berge Nantong	2006	82,244
Berge Ningbo	2006	82,252
Berge Summit	1990	78,489
BW Aries	2014	84,196
BW Austria	2009	84,603
BW Balder	2016	84,000
BW Birch	2007	82,303
BW Boss	2001	84,301
BW Brage	2016	84,000
BW Carina	2015	84,154
BW Cedar	2007	82,260
BW Confidence	2006	83,270
BW Elm	2007	82,291
BW Empress	2005	78,908
BW Energy	2002	82,551
BW Freyja	2016	84,000
BW Frigg	2016	84,000
BW Gemini	2015	84,196
BW Kyoto	2010	83,299
BW Leo	2015	84,195
BW Liberty	2007	84,597
BW Libra	2015	84,196
BW Lord	2008	84,615
BW Loyalty	2008	84,601
BW Magellan	2016	84,171
BW Malacca	2016	84,105
BW Messina	2017	84,000
BW Mindoro	2017	84,000
BW Njord	2016	84,000
BW Oak	2008	82,253
BW Odin	2009	82,000
BW Orion	2015	84,196
BW Pine	2011	80,156
BW Prince	2007	82,383
BW Princess	2008	82,383
BW Sakura	2010	78,500
BW Thor	2008	82,000
BW Tokyo	2009	83,270
BW Trader	2006	78,631
BW Tucana	2016	84,196
BW Tyr	2008	82,000
BW Var	2016	84,000
BW Volans	2016	84,134
Maharshi Vishwamitra	2001	84,301
Oriental King	2017	84,000
Yuricosmos	2010	78,908
Mitsubishi Hull 2335 *	2020	84,000
Mitsubishi Hull 2336 *	2020	84,000
No. of vessels	48	3,983,108

Dry Bulk Fleet		
Vessel Name	Built	DWT
BW Acorn	2010	82,000
BW Barley	2010	82,000
BW Canola	2014	82,000
BW Durum	2016	61,200
BW Einkorn	2010	82,000
BW Flax	2010	58,000
BW Hazel	2013	81,510
Oshima Hull 10974 *	2020	61,800
Oshima Hull 10975 *	2020	61,800
Oshima Hull 10976 *	2021	61,800
Oshima Hull 10977 *	2021	61,800
Tsuneishi Hull SC338*	2019	81,600
Tsuneishi Hull SC339*	2019	81,600
Tsuneishi Hull SC331*	2020	81,600
Tsuneishi Hull SC343*	2020	81,600
No. of vessels	15	1,102,310

FSRU Fleet		
Vessel Name	Built	CBM
BW Singapore	2015	170,000
BW Integrity	2017	170,000
DSME Hull 2488 *	2018	173,400
No. of vessels	3	513,400

LGC Fleet		
Vessel Name	Built	CBM
BW Helios	1992	57,160
BW Nantes	2003	59,399
BW Nice	2003	59,375
No. of vessels	3	175,934

LNG Fleet		
Vessel Name	Built	CBM
Berge Arzew	2004	135,327
BW Boston	2003	135,297
BW GDF Suez Brussels	2009	159,263
BW GDF Suez Everett	2003	135,268
BW GDF Suez Paris	2009	159,288
BW Pavilion Leeara	2015	161,820
BW Pavilion Vanda	2015	159,438
LNG Benue	2006	143,033
LNG Enugu	2005	143,007
LNG Imo	2008	145,467
LNG Kano	2007	145,567
LNG Lokoja	2006	145,557
LNG Ondo	2007	145,483
LNG Oyo	2005	142,924
LNG River Orashi	2004	142,996
BW Tulip	2017	173,400
BW Lilac	2018	173,400
DSME Hull 2489 *	2019	173,400
DMSE Hull 2490 *	2019	173,400
DMSE Hull 2491 *	2020	173,400
No. of vessels	21	3,066,735

MR Product Tanker Fleet		
Vessel Name	Built	DWT
BW Bobcat	2014	49,999
BW Cheetah	2014	49,999
BW Cougar	2014	49,999
BW Eagle	2015	49,999
BW Egret	2014	49,999
BW Falcon	2015	49,999
BW Hawk	2015	49,999
BW Jaguar	2014	49,999
BW Kestrel	2015	49,999
BW Leopard	2014	49,999
BW Lioness	2014	49,999
BW Lynx	2013	49,999
BW Merlin	2015	49,999
BW Myna	2015	49,999
BW Osprey	2015	49,999
BW Panther	2014	49,999
BW Petrel	2016	49,999
BW Puma	2013	49,999
BW Raven	2015	49,999
BW Swift	2016	49,999
BW Tiger	2014	49,999
BW Wren	2016	49,999
JMU Hull S150 *	2019	49,500
JMU Hull S151 *	2019	49,500
JMU Hull S158 *	2020	49,500
JMU Hull S159 *	2020	49,500
No. of vessels	26	1,297,978

VLCC Fleet*		
Vessel Name	Built	DWT
Samsung Hull 2229 *	2019	319,000
Samsung Hull 2230 *	2019	319,000
Samsung Hull 2231 *	2019	319,000
Samsung Hull 2232 *	2019	319,000
No. of vessels	4	1,276,000

LR 1 Product Tanker Fleet		
Vessel Name	Built	DWT
BW Amazon	2006	76,565
BW Clyde	2004	73,400
BW Columbia	2007	76,604
BW Danube	2007	76,543
BW Hudson	2007	76,574
BW Kallang	2016	74,000
BW Kronborg	2007	73,708
BW Lara	2004	73,495
BW Lena	2007	76,578
BW Nile	2017	74,000
BW Orinoco	2007	76,580
BW Rhine	2008	76,578
BW Seine	2008	76,580
BW Shinano	2008	76,594
BW Tagus	2017	74,000
BW Thames	2008	76,587
BW Yangtze	2009	76,579
BW Yarra	2017	74,000
BW Zambesi	2010	76,578
Compass	2006	72,736
Compassion	2006	72,782
Onomichi Vessel 1	2019	80,000
Onomichi Vessel 2	2019	80,000
No. of vessels	23	1,741,061

LR 2 Product Tanker Fleet		
Vessel Name	Built	DWT
Daehan Hull 5021 *	2019	115,000
Daehan Hull 5022 *	2019	115,000
Daehan Hull 5023 *	2019	115,000
Daehan Hull 5024 *	2019	115,000
Daehan Hull 5025 *	2019	115,000
Daehan Hull 5026 *	2019	115,000
No. of vessels	6	690,000

Chemical Tanker Fleet		
Vessel Name	Built	DWT
Bold World	1998	19,128
Bright World	1997	19,299
BW Argon	2016	19,900
BW Mia	2008	19,702
BW Stream	2010	19,998
BW Boron	2016	19,900
BW Cobalt	2016	19,900
BW Gallium	2017	19,900
BW Helium	2017	19,994
BW Iridium	2018	19,900
BW Lithium	2017	19,981
BW Mercury	2018	19,900
BW Neon	2018	19,900
Fukuoka Hull 1323 *	2018	19,900
Fukuoka Hull 1324 *	2018	19,900
No. of vessels	15	297,202

Offshore Fleet		
Vessel Name		
Abo		
BW Adolo		
Belokamenka		
Berge Helene		
BW Athena		
BW Catcher		
BW Cidade De São Vicente		
BW Joko Tole		
BW Pioneer		
Cidade de São Mateus		
Espoir Ivorien		
Petróleo Nautipa		
Polvo		
Sendje Berge		
Umuroa		
Yuum K'ak'Naab		
No. of units		16